

Garden  
of the  
future





## Are you big into bees, butterflies, bats and botany?

We are! We want to ensure that Marks Hall Estate is an inspiring landscape which nurtures people, plants and wildlife.


The landscape here at Marks Hall Estate provides a rich diversity of habitats for a huge variety of species. Our woodlands are managed using traditional techniques and offer the best conditions for wildflowers, providing food and habitats for our native wildlife.

We've encouraged our bat population by adapting our Second World War air raid shelters to accommodate bats. We've also had great success in supporting butterfly populations.

**So, if you're as passionate about wildlife conservation as we are, why not turn your artistic talent to our eco-friendly garden design challenge?**

**< Barbastelle bat -  
courtesy of Simon Leatherdale**

*Introduction!*



**Design your own sustainable garden of the future!**

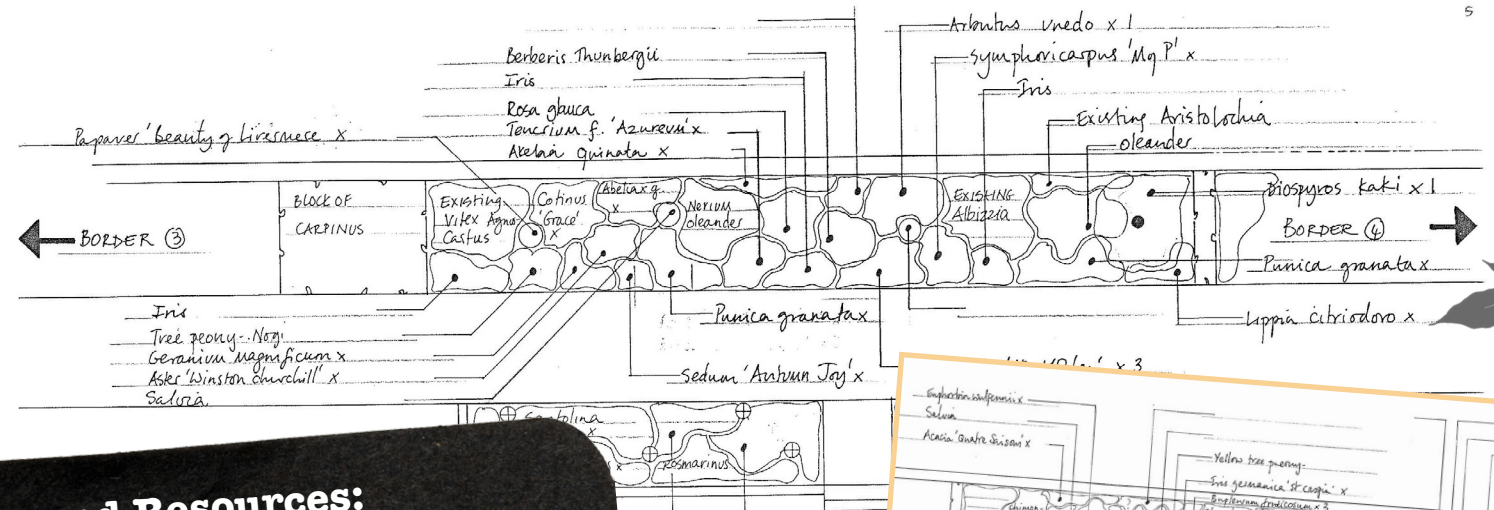
We encourage the principle of sustainability amongst our wider community as much as we can. This is why we'd like to get you thinking about how the everyday garden could be transformed into a haven for wildlife and plants, as well as for the people enjoying it.

The upkeep of gardens can use huge amounts of precious water, toxic petrochemical fertilisers, and materials that can have a lasting negative effect on our environment. Sustainable gardens avoid wasting resources and minimise the impact on our environment, as well as providing a home for wildlife and a chance to nurture native veg, plants and wildflowers. Which is all very good news for the micro eco-system on our doorstep!

**Why not allow your creative juices to overflow (and help inspire others to save the planet) by designing your own sustainable, eco-friendly garden?**

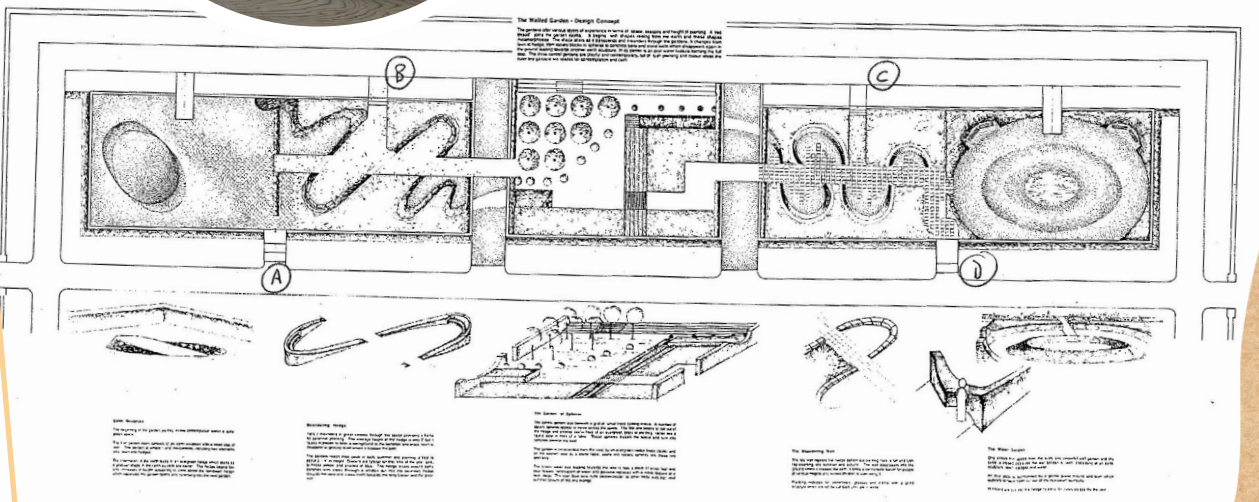
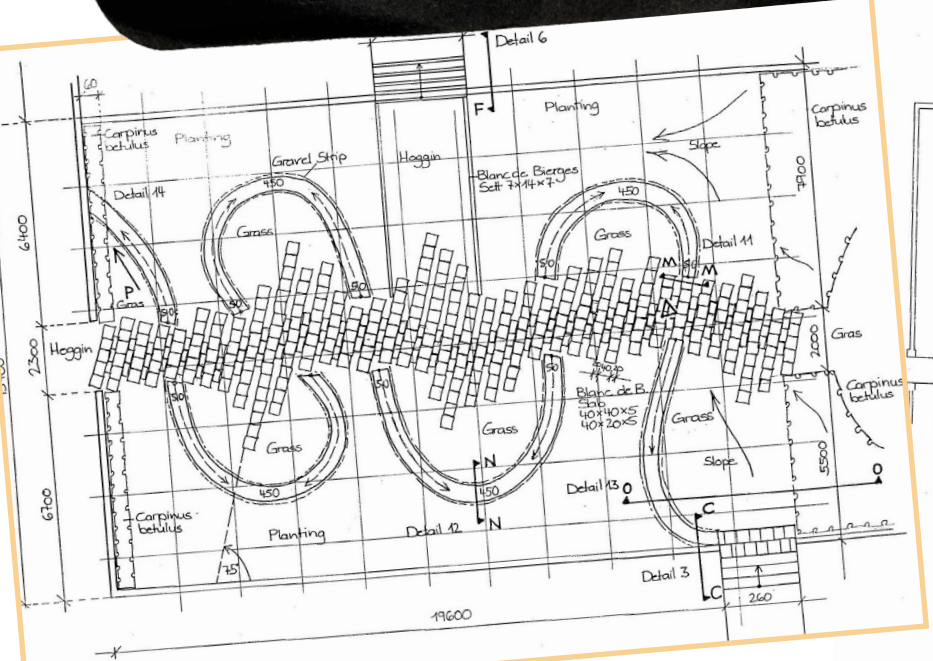
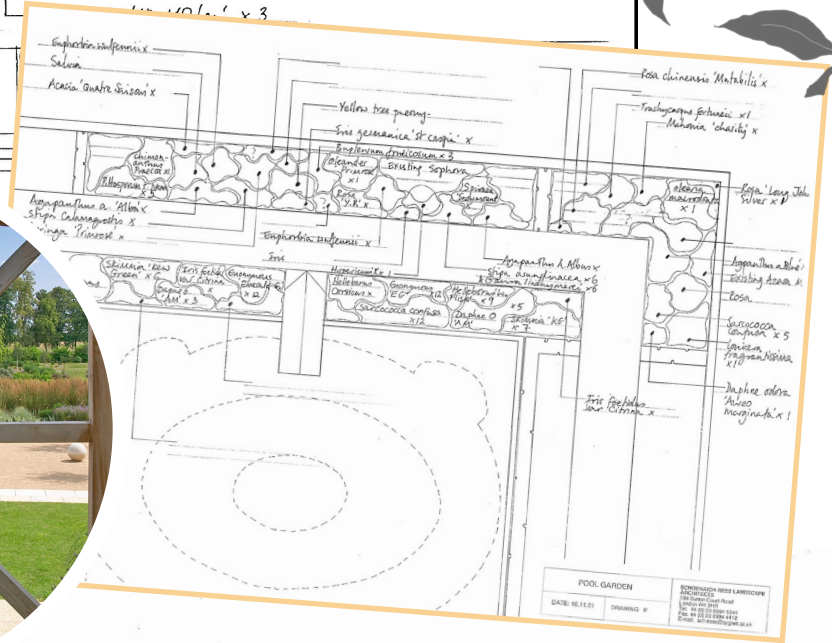
## Activity





### Tips and Resources:

- Garden designs are often presented as a view of the garden from above, usually to scale.
- Creating a mood board can bring your design to life - you could include photographs of specific plants, samples of materials you plan to use, colour schemes and textures.



POOL GARDEN  
DATE: 16/05/11 DRAWING #

The Walnut Garden - Design Concept  
The garden is a rectangular space, approximately 10m wide and 20m long, situated on a slight slope. It is designed to be a peaceful retreat, featuring a central water feature, a series of paths, and a variety of plants. The design is inspired by the natural beauty of the site and aims to create a harmonious and functional outdoor space.

**Section A**  
This section shows the profile of the garden path and the adjacent planting area. The path is 1.2m wide and is bordered by a low wall on one side. The planting area is 0.5m high and contains a variety of plants, including shrubs and perennials.

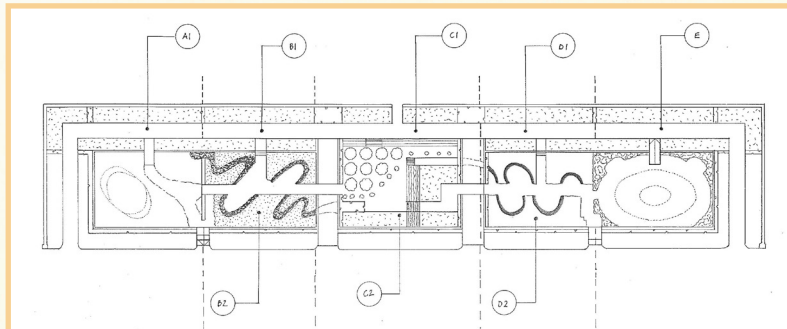
**Section B**  
This section shows the profile of the garden path and the adjacent water feature. The path is 1.2m wide and is bordered by a low wall on one side. The water feature is 0.5m high and contains a variety of plants, including shrubs and perennials.

**Section C**  
This section shows the profile of the garden path and the adjacent seating area. The path is 1.2m wide and is bordered by a low wall on one side. The seating area is 0.5m high and contains a variety of plants, including shrubs and perennials.

**Section D**  
This section shows the profile of the garden path and the adjacent water feature. The path is 1.2m wide and is bordered by a low wall on one side. The water feature is 0.5m high and contains a variety of plants, including shrubs and perennials.

## Tips and Resources continued:

- **Before you begin** think about the ways in which a garden is used - relaxation, eating, socialising, growing food, playing, a home for nature, a retreat, for inspiration.
- **Consider the structure of your garden.** Is it multi-level? Walled? Might there be different areas for different activities?
- **What kind of hard landscaping might you incorporate?** Could there be a wildlife pond, a home office, a patio or even an **outdoor shower** or bath that recycles the water used for the garden? Perhaps **recycle old materials**?
- **What other features would you include?** Like wildlife habitats, bird baths and feeders, or solar powered lighting?



- **Consider your planting from a sustainability perspective,** for example you could include wildlife attracting plants, an organic vegetable, fruit and herb plot, or a wild meadow area.



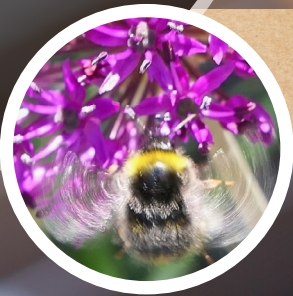
- **Think about the types of materials you would use** for any landscaping, furniture or features and be as sustainable as possible - recycled items like glass and roof tiles can make amazing features, bamboo is very sustainable, and gravel or mulch can help the soil retain moisture.
- **How might you build** re-using any garden waste, composting or water collection?

### Did you know?

Gardens in the UK account for 10 million acres of our total land space. Imagine how much difference it would make if they were all dedicated to being sustainable and supportive of our wildlife and plants?



< Wollemi Pine at Marks Hall Estate



< Bumble bee in Walled Garden at Marks Hall Estate



### Useful websites

The [Gardenista website](#) has some great tips for making a garden as eco-friendly as possible! Take a look at [Garden Design](#) for inspiration, and of course, [Pinterest](#) is full of bright ideas!

Ripening olives >



### Share the love, peace and harmony...

Why not send us a pic of your designs on social media and help spread the sustainability vibe?

