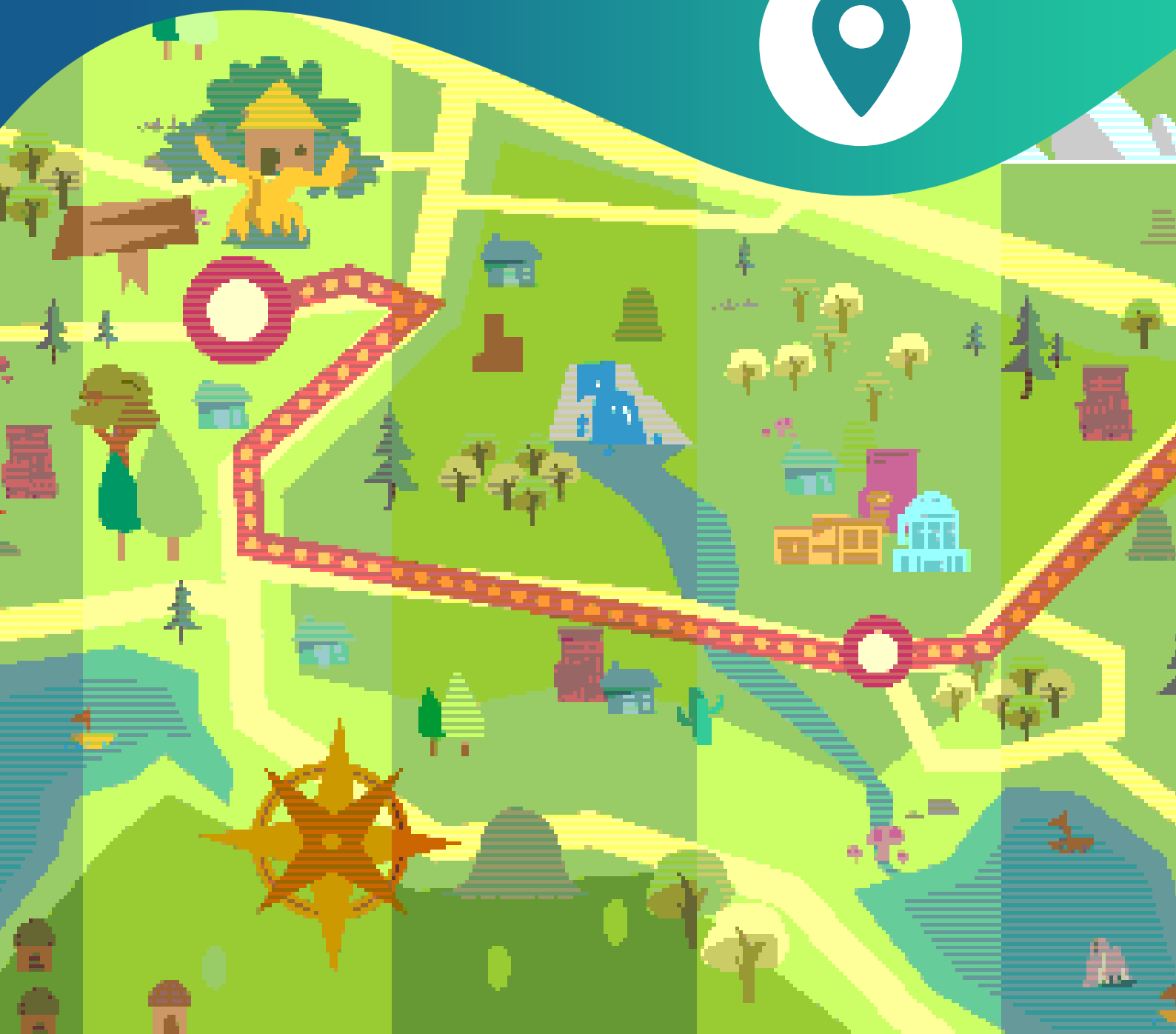


KEYSTAGE 1-2 GEOGRAPHY



Map reading



INTRODUCTION



At Marks Hall Estate we have our very own ecosystem! Plants, trees, insects, mammals, fish, birds... our environment supports all kinds of living things who rely on each other to survive.



Marks Hall Estate covers over 2,000 acres - that's 15 times the size of Legoland!

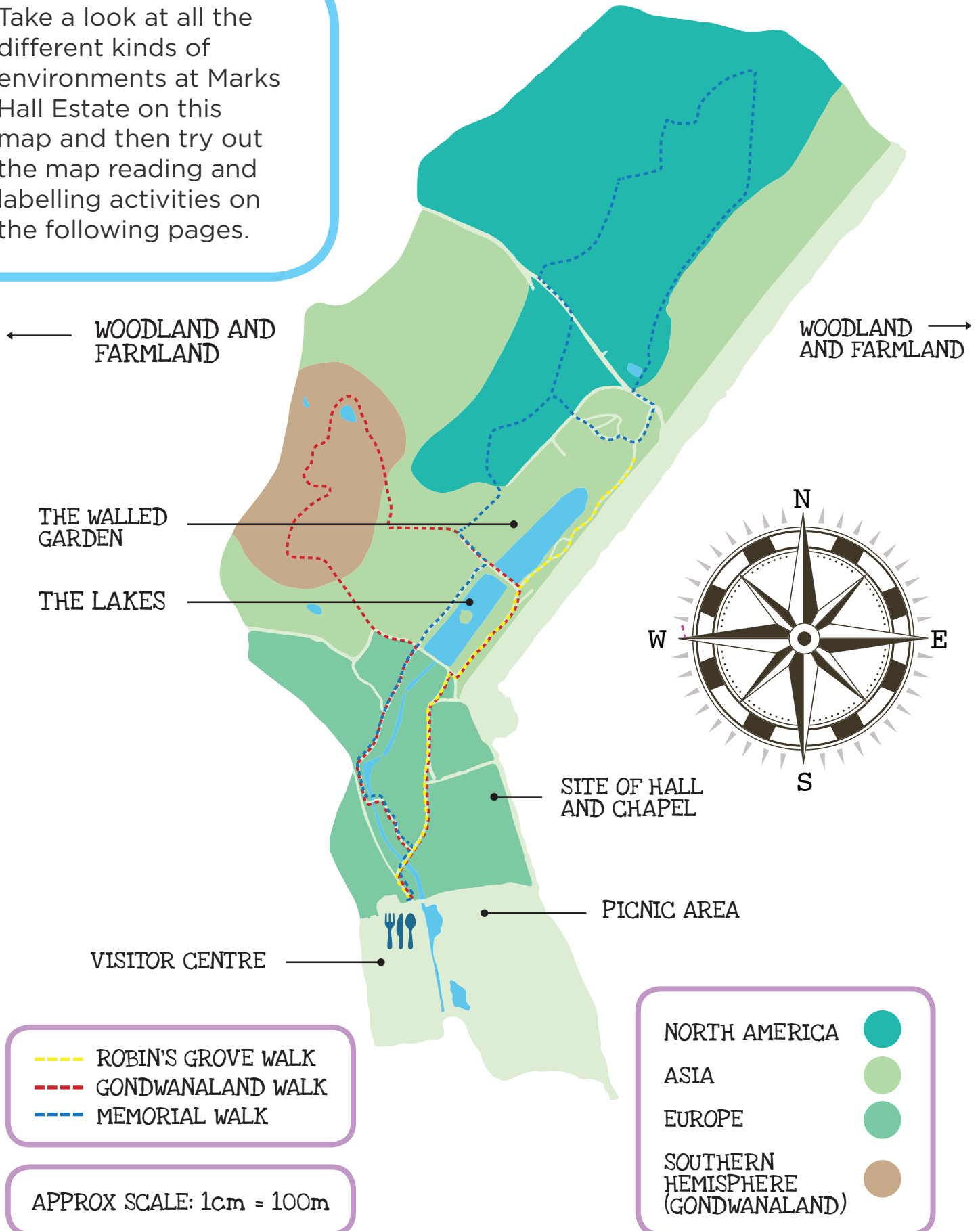


Please print out the following pages...

When you have filled in your answers, why not ask someone to check them for you?

ACTIVITY: Understanding maps

Take a look at all the different kinds of environments at Marks Hall Estate on this map and then try out the map reading and labelling activities on the following pages.



ACTIVITY: Understanding maps

- Have a look at these symbols below. Can you draw them onto the correct places on the map?



Lake



River



Woodland



Footpath



Chapel



Visitor Centre

HINT: Churches and chapels were built in the shape of a cross from above.



- Look at the compass. If you're walking in a straight line from the Visitor Centre to the Chapel, which direction do you need to go?

West

South

North East

South West

- Can you colour in the shortest route on a path from the Arboretum to the Walled Garden?

- Which footpath is the longest walk? Pop your answer in the box below:

- Which is the shortest?



ACTIVITY: Understanding maps



- If you wanted to go and get something to eat, which symbol on the map might tell you where a café is? Draw it in the box below:



- Many insects like flowering plants, can you mark a place on the map you think these insects might go to? Mark it on your map with your own symbol design for an insect.
- Where do you think you could find some fish? Mark it on your map with your own symbol design for fish.
- Using the scale of the map, can you figure out the distance from the picnic area to the top of the lake? Don't forget to show your work!

